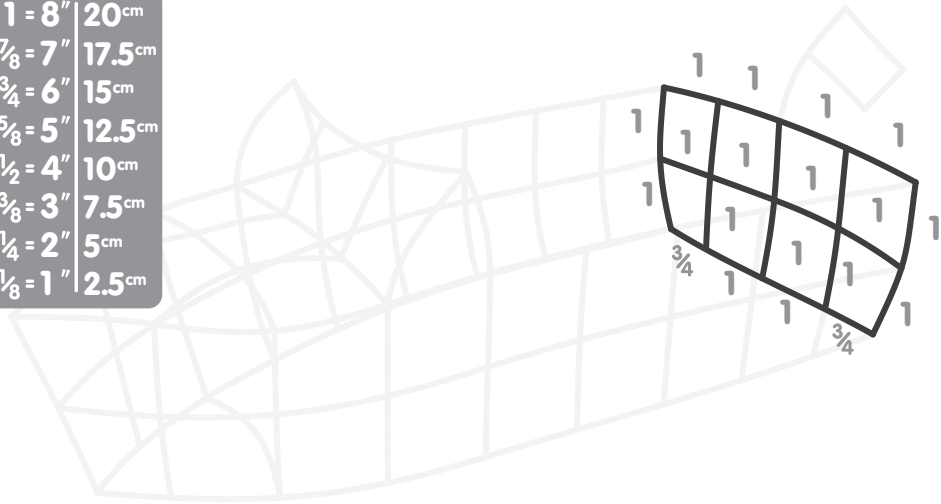
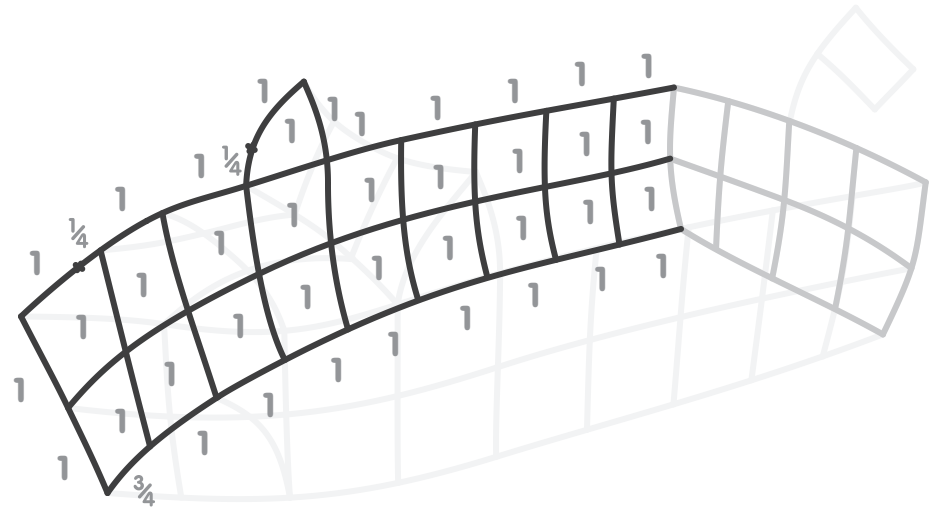


1

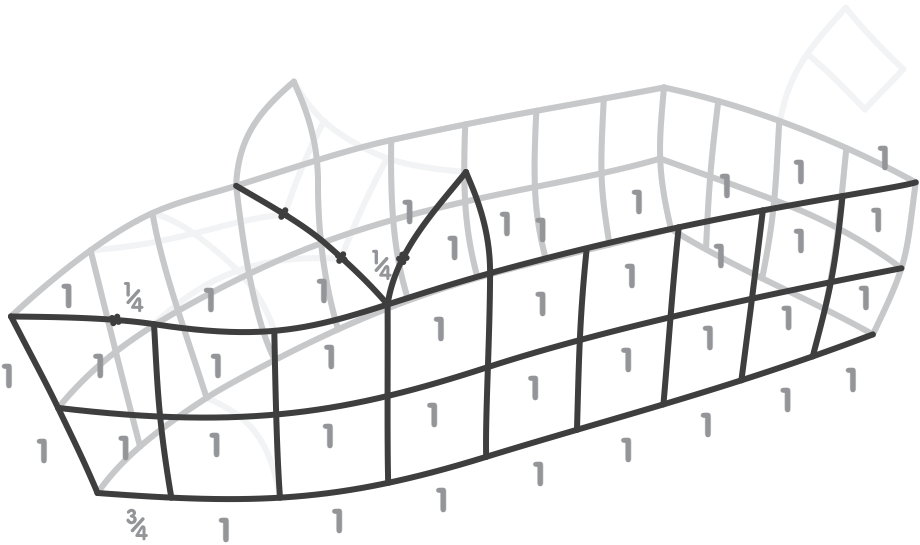
1	=	8"	20cm
$\frac{7}{8}$	=	7"	17.5cm
$\frac{3}{4}$	=	6"	15cm
$\frac{5}{8}$	=	5"	12.5cm
$\frac{1}{2}$	=	4"	10cm
$\frac{3}{8}$	=	3"	7.5cm
$\frac{1}{4}$	=	2"	5cm
$\frac{1}{8}$	=	1"	2.5cm



2



3



4

